

spare



Unlocking Mobility

Mobilitet til Lunsj, November 13th, 2024

EUROPE

Our European services powered by Spare

Local expertise with experience working with other agencies in Europe.

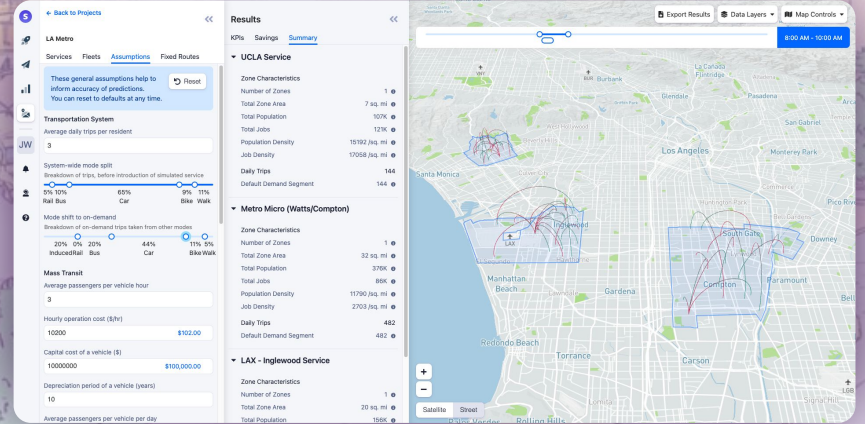
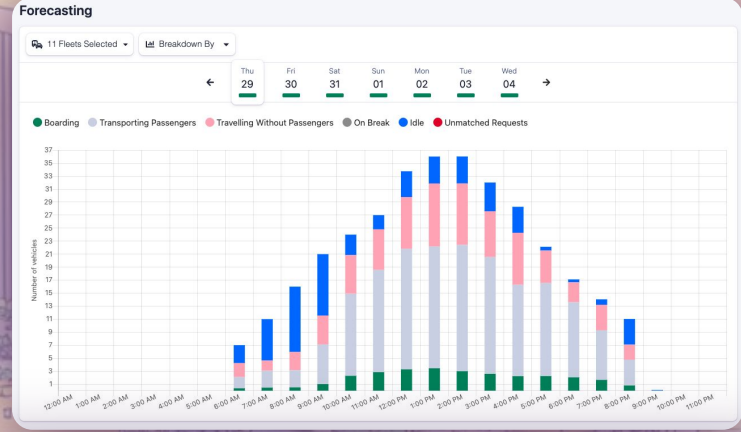
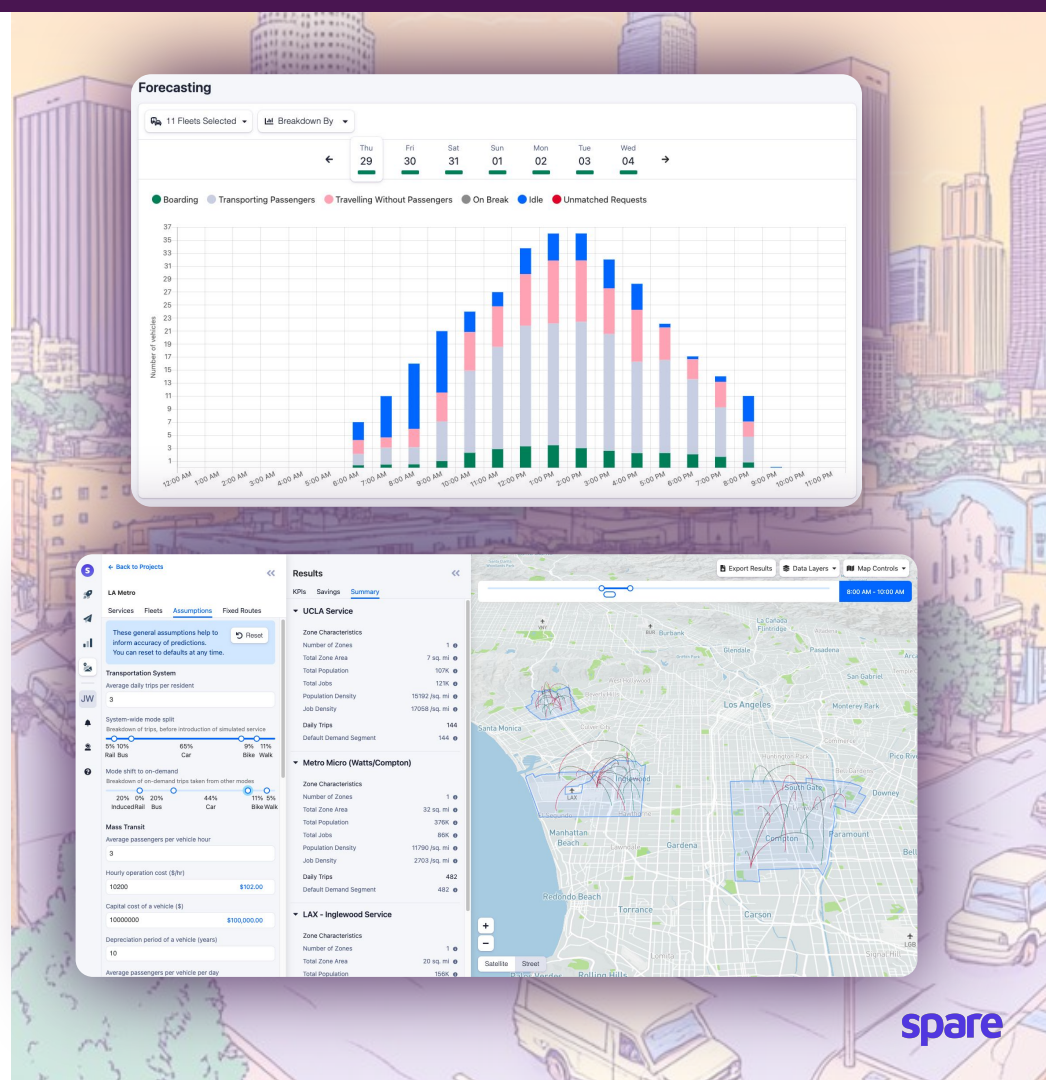


**The Current Mobility
Landscape
&
Market Trends**

Similar challenges for PTAs & Operators

Even though new innovative solutions pop-up seemingly every day, some of the most common challenges stay the same.

- + Fragmented transport services
- + Inefficient operations due to high trip variability
- + Cost challenges → More for less



Trends Towards Modernizing Mobility



Strategic Coordination

- Calls for increased synergy between public transport contracts
- Streamline contract/service parameters, i.e. detour windows, pooling, etc.



Real-Time Capabilities

- AI and other technologies unlocks the possibility to process the trip variability and optimizing operations in real-time.



Travel Flexibility

- Riders increasingly value flexibility when it comes to their transport needs, hence the high trip variability even for pre-scheduled trips such as school trips.

The image features a stylized illustration of a modern building with large glass windows on the left. In the foreground, there is a vibrant garden of pink and yellow flowers. A man in a purple jacket is seated in a wheelchair, and a man in a yellow hoodie stands beside him, holding the wheelchair's handle. To the right, a white van with a wheelchair accessibility symbol is parked on a paved area. The background shows a city skyline under a bright, hazy sky. The Spare logo is in the top left corner.

spare

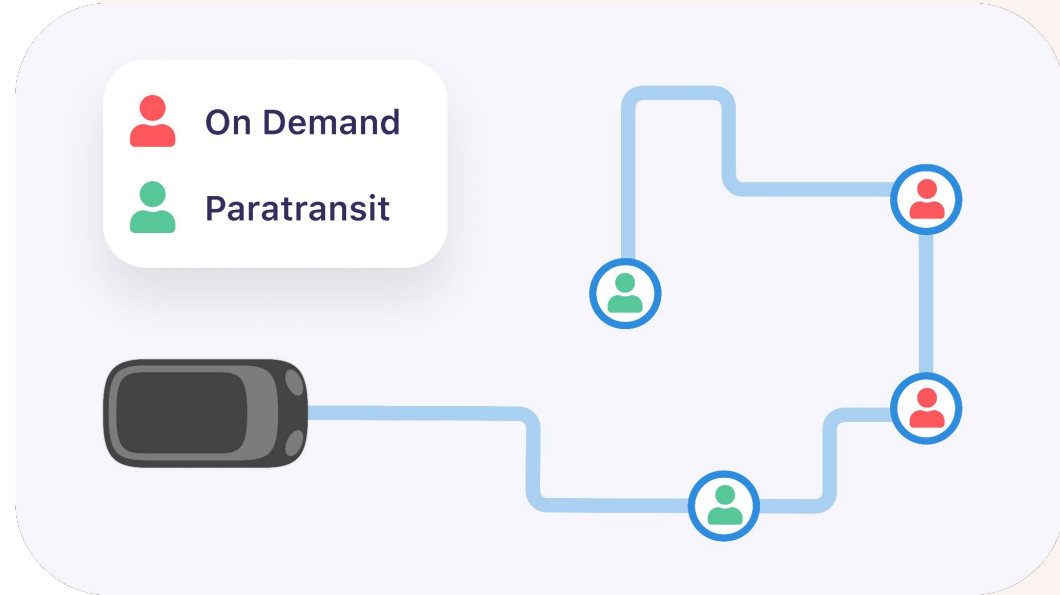
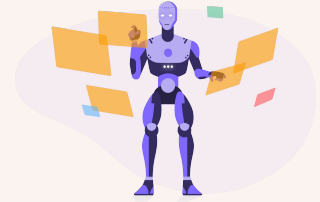
OUR MISSION

**Empowering everyone
to unlock the potential
of mobility.**

AI at your service: Spare Engine™

Spare's routing & optimization engine leverages state-of-the-art, proprietary AI algorithm to drive cost & efficiency improvements for your microtransit and paratransit services.

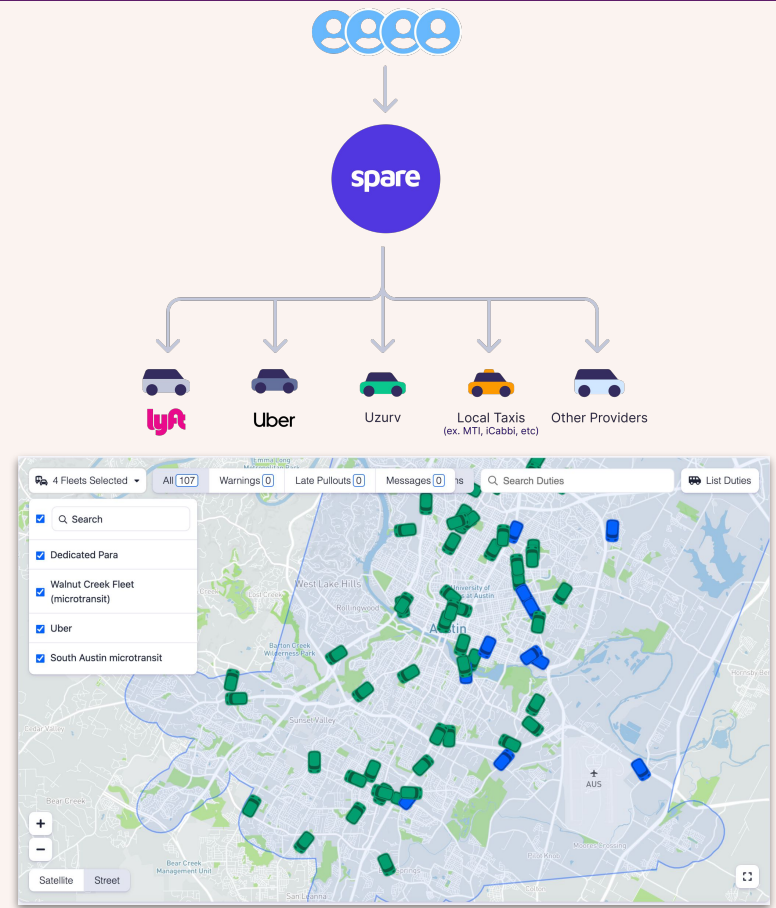
- ✓ One fleet, Many services
- ✓ Optimizes in real-time, while adhering to service specifications and trip variability
- ✓ Reduce operating costs by allocating resources effectively




More fleets, less problems: Open Fleets™


Spare's Open Fleets technology gives you the tools to connect to multiple fleet providers instantly through one pane of glass.


- ✓ Many Fleets, One Service
- ✓ Automatically directs late or overflow trips to additional fleets, ensuring uninterrupted service
- ✓ Expands capacity and coverage without requiring a large internal fleet, adapting to fluctuations in demand cost-effectively




Challenges

 **Transition Process:** Changing from legacy systems requires careful planning and time to ensure service continuity during the transition.

 **Adaptation Period:** Full integration often involves an initial adjustment period as both the system and staff align with new operational processes.

 **Data Migration:** Migrating large amounts of data from legacy systems can be time-consuming and technically challenging

 **Integration with Existing Systems:** Agencies often rely on multiple systems for scheduling, payment, and reporting. Ensuring seamless integration with these systems can be technically complex.

Use Cases

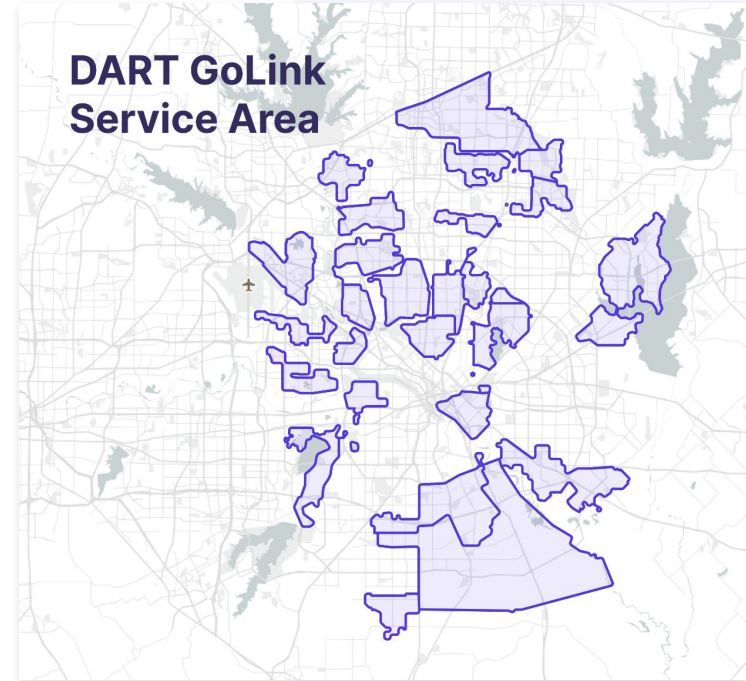


The World's Largest Microtransit Service, Powered by Spare

Launch Date: 2019, with contract recently renewed until 2032

Key innovations:

- Enabled **seamless integration of paratransit, on-demand, and microtransit services** on one platform.
- Reduced operational costs through **real-time routing and pooling.**
- **Integrating Dedicated and Non-dedicated Fleets** through patented Spare Open Fleets technology, accommodating surges in demand while balancing wait time.



185k

Trips Per Month

97%

Rider
satisfaction
rating

\$13

Average
Cost Per Trip

9 min

Median wait time

40+

Zones

700

Square miles

On-demand without fleet restrictions

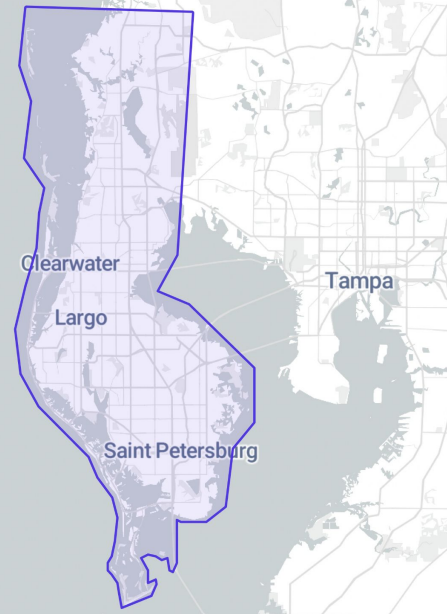
Launch Date: 2023

Key innovations:

- Implemented a flexible on-demand microtransit service to **serve under-connected areas**.
- **Integrated seamlessly with existing public transit routes** for improved coverage and accessibility.
- Enhanced operational flexibility with Spare's **Open Fleets integration**, allowing PSTA to coordinate with Uber and Transdev to meet varying demand.



Pinellas Suncoast Transit Authority Service Area



95%

Rider Satisfaction

+5

Different fleet providers

95%

On-Time Performance

18%

PPVH Increase

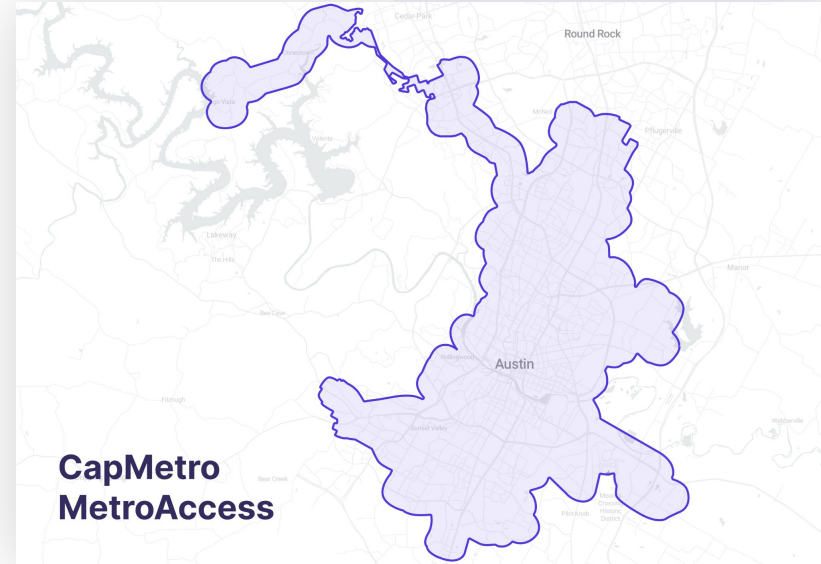
Modernizing transit in Austin

Launch Date: 2023

Key innovations:

- Implemented **AI-driven, minute-by-minute trip optimization**, resulting in over 95% on-time performance.
- Reduced dispatcher intervention with **automated optimization for late trips**.
- **Integrated eligibility management**, resulting in riders getting access to the service automatically as soon as their application is confirmed.

CapMetro



+95%

Avg. On-time performance

100+

Daily maximum active vehicles

+2,700

Daily boardings

Q&A

Thank you for Spare-ing your time!

Enjoy more efficient mobility services with Spare. For more questions please reach out to Adam at Spare.

Adam Sandström

Account Executive, Nordics at Spare

adam.sandstrom@spare.com

+46 733 300 208