



How can public transport compete with the private car?

November 2024

Transport networks across the world are evolving from siloed operations into dynamic, data-driven networks



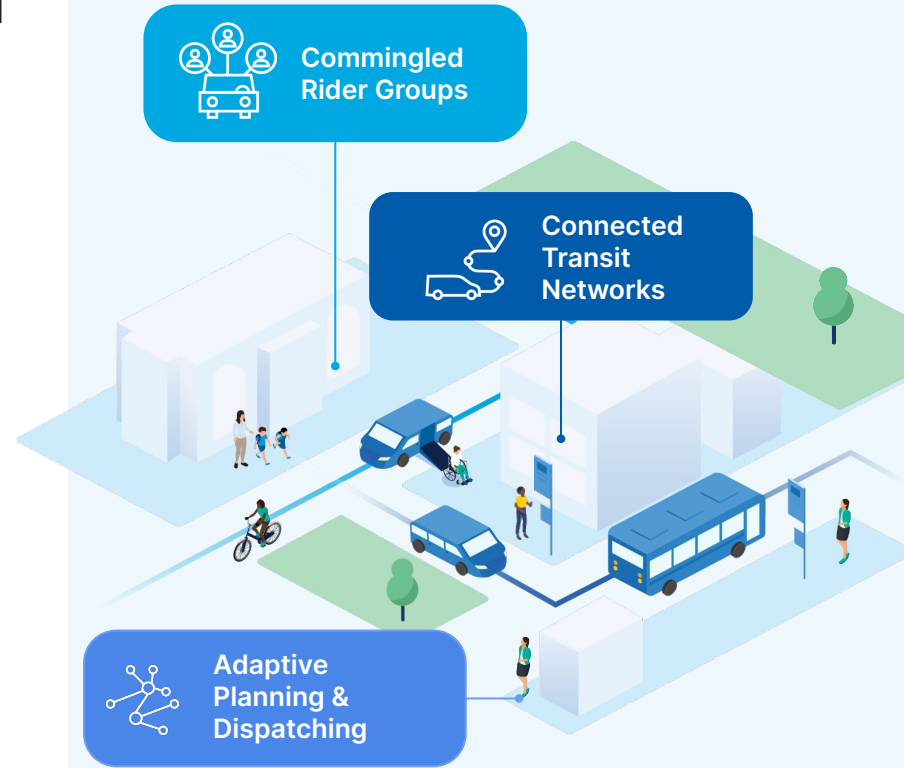
Microtransit



Paratransit

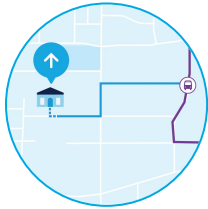


Fixed route



Integrated transport enables agencies to manage all aspects of a network & provide riders with a simple and seamless experience

Agency Controls



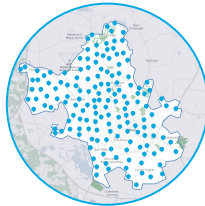
Coverage zones & modes



Rider programs & eligibility

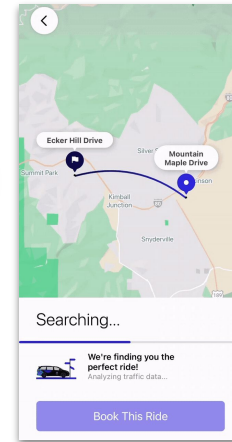


Trip proposal & dispatching rules



Network visibility & reporting

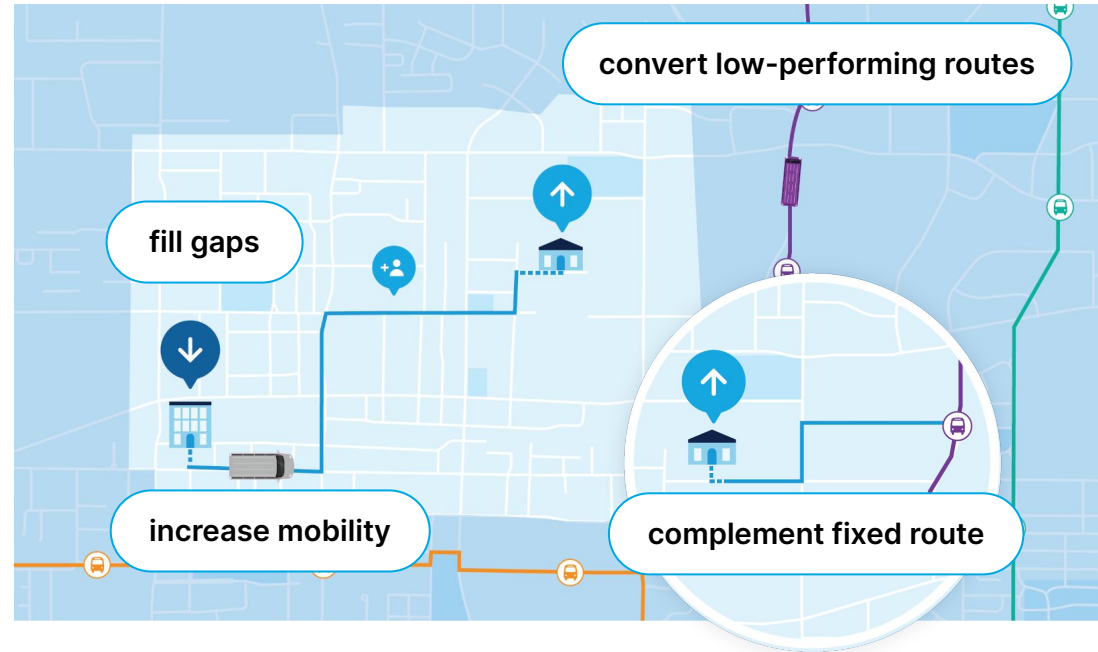
Rider Experience



Riders receive trip proposals based on your rules

How transport agencies use DRT

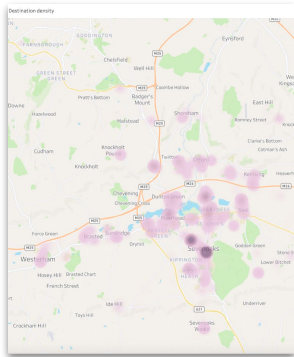
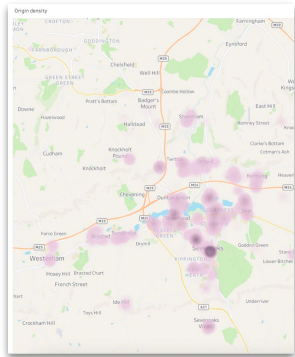
- 1 Fill gaps** where the fixed-route network is limited.
- 2 Complement** fixed-route with first and last-mile solutions.
- 3 Convert underperforming fixed routes** to on-demand services.
- 4 Increase mobility** for seniors or disabled riders.



Data reflects *how* people use a network, not the network they *want*



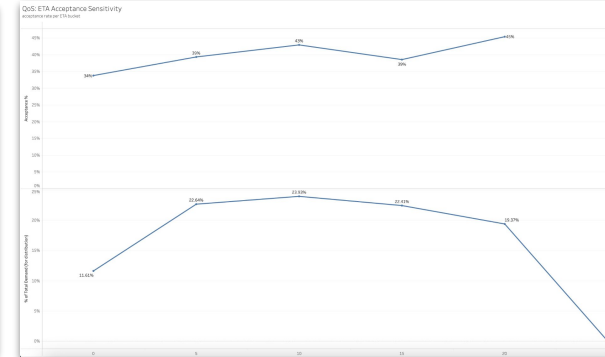
DRT can show what *true demand* looks like in a network



Where do riders truly start & end their trip



When do riders really want to travel

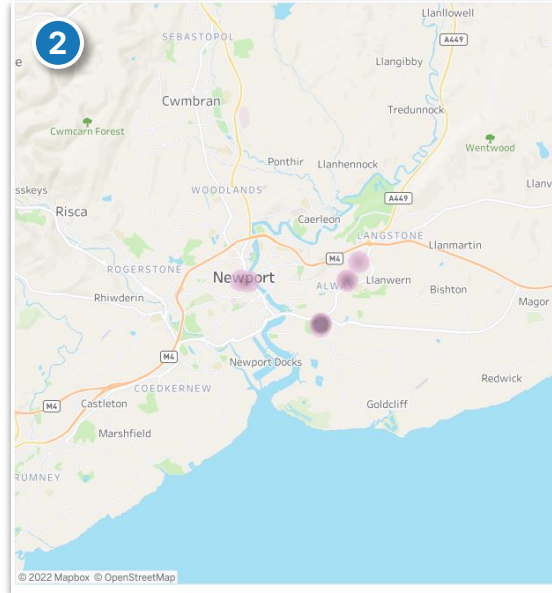
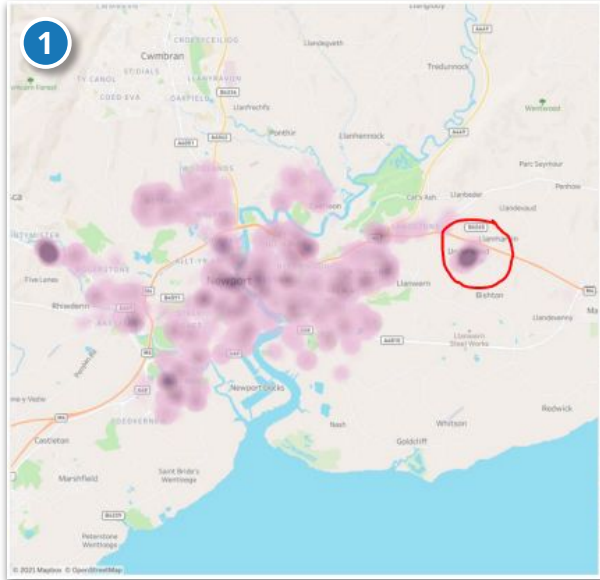


How do riders behave

Newport: DRT can complement and enhance fixed-line buses

DRT demand origin hotspot Mon-Fri 07 - 09:00

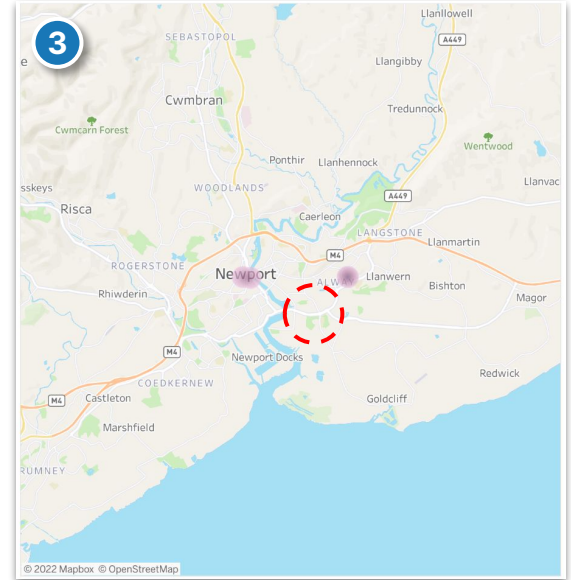
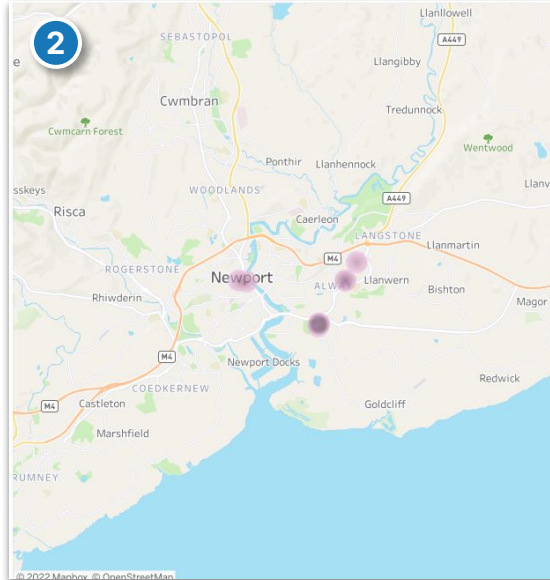
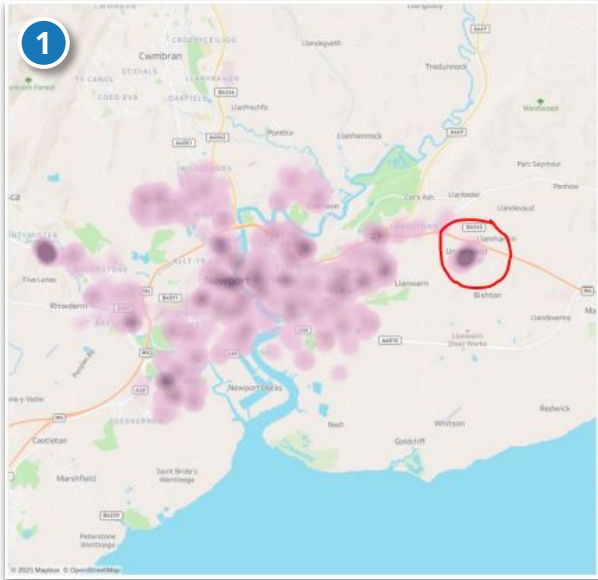
Post-network change



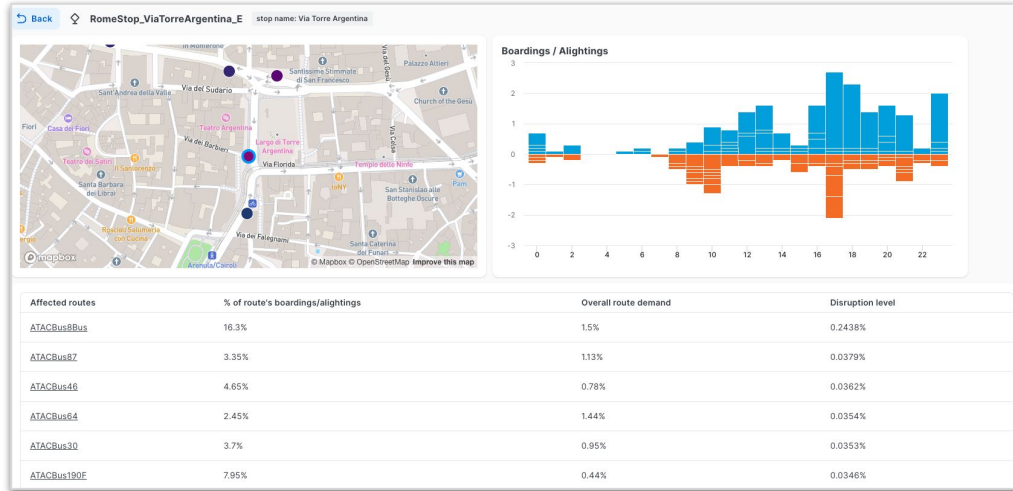
Newport: transferring demand to fixed-line bus increases capacity

DRT demand origin hotspot Mon-Fri 07 - 09:00

Post-network change



Planning: popular stops & connections between DRT & fixed-line



Accessibility: DRT improves access to jobs and opportunities for those most in need



More than 90% of Birmingham's jobs, schools and hospitals are now accessible by public transit after implementing Via

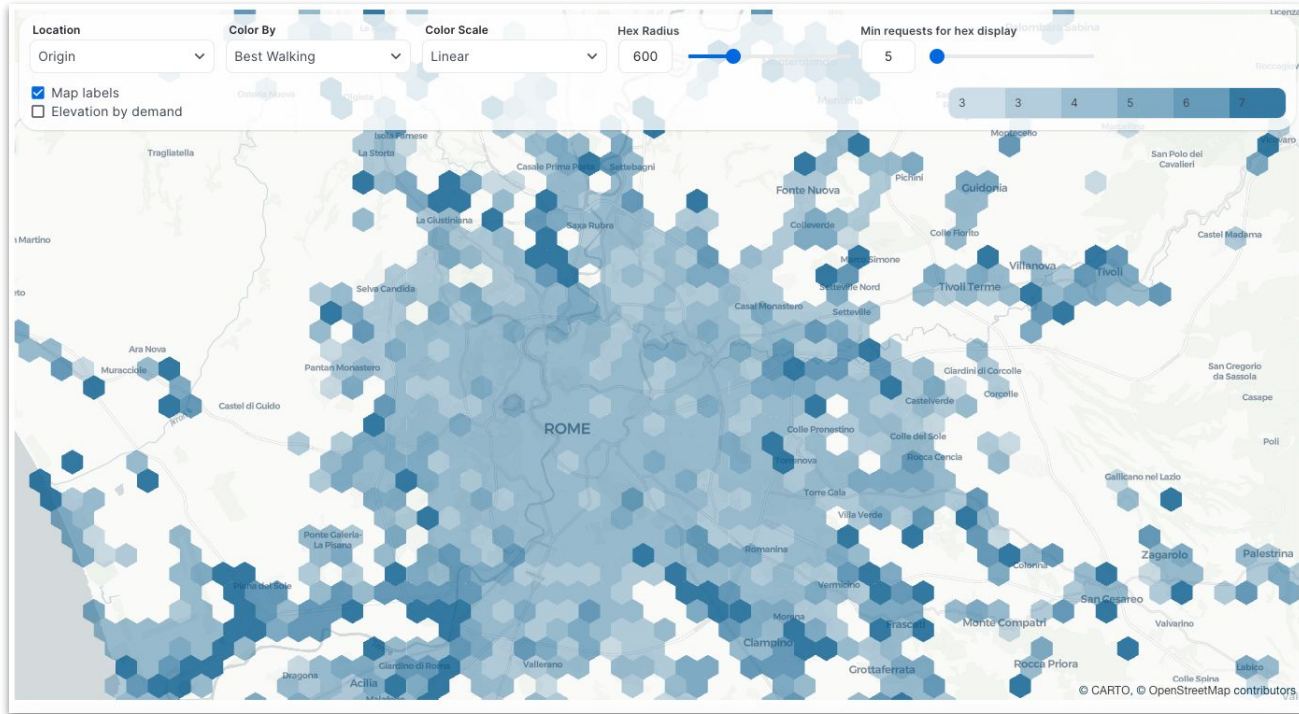
I've been using Metgo for sometime now. I don't know where I'd be or what circumstances I'd have to face without them. They have helped me tremendously in this journey. Life. Making sure I make all my appointments, interviews, and work.

I've been blessed to get to know the drivers. Shanghai, Judy, Donnie, and Carlton I've met so far. They are all so sweet, compassionate, and hard working. Shanghai always goes out of his way to help everybody. His compassion for life knows no bounds. He's always asking me, "Hey Vicki, do you want me to make a call?" or, "Is there anything I can do to help?"



48% of riders gained employment through improved transit access

Accessibility: how far riders need to walk to access stops



Modal shift

A high quality DRT alternative has proven to encourage riders back into public transport and leave their private vehicles at home



73% of riders with private vehicle access reduced their car usage in Wales



94% met demand



< 60m walk to pick-up



84% of riders with cars reduced car usage in High Wycombe, UK



16 min
ETA



< 75m walk to pick-up



29% of trips would have used a private car or taxi instead in West Midlands, UK



22 min
ETA



< 90m walk to pick-up



Thank you.

samuel.griffiths@ridewithvia.com